

# Government Shivalik College Naya Nangal

## STUDENT SATISFACTION SURVEY REPORT

Session: 2022-23

### Contents:

- Objective
- Methodology for Analysis of Student Satisfaction Survey
- Participants
- Analysis and Interpretation of Student Satisfaction Survey
  - Regularity in taking lectures
  - Punctuality in class
  - Knowledge about subject taught
  - Ability to link current knowledge and practical experience while teaching
  - Ability to involve students while teaching
  - Ability to maintain discipline in class
  - Communication skills in Class
  - Use of modern teaching aids in lecture
  - Availability outside the class
  - Covers syllabus in time
  - Uses fair internal evaluation process
  - Gives practical projects/case studies that enhances learning of students
  - Gives appropriate feedback to improve performance of students
  - Attitude of teachers towards students who participate in the extra-curricular activities?
  - Ability of the teacher to design quizzes/ tests/ assignments
  - How helpful was the teachers in advising?
  - Course wise Overall Score
  - Overall Score for Various Parameters
  - Overall Score for Various Parameters by Course

### Objective

- a. To measure the student's level of satisfaction on their experiences with the Government Shivalik College Naya Nangal covering the following areas:
  - Adequacy, accessibility and quality of teaching-learning resources in the college environment.
  - Effectiveness of communication.
  - Academic Staff Performance (Quality of teaching).
  - Evaluation procedure and its effectiveness.
  - Overall student satisfaction level.
- b. To identify and address gaps for improvement.

The survey was conducted online. Each question has five responses, and students have to choose the most appropriate one.

### Methodology for Analysis of Student Satisfaction Survey:

The questionnaire is based on the Likert scale where the responses are recorded on a scale of 1 to 5, with the most positive response (Excellent) being rated as 5 and last option of response (Fair) being rated as 1. The given questionnaire was filled online by 539 random students from all UG classes. After the survey, the mean score for each question has been calculated and ) { the overall mean has been arrived at.

### Method for calculation of mean score on Likert Scale:

To determine the mean score of the 5-point Likert scale, the following formula has been used:

**Mean score = (5 × No. of responses in Excellent parameter + 4 × No. of responses in Very Good parameter + 3 × No. of responses in Good parameter + 2 × No. of responses in Fair parameter + 1 × No. of responses in Average parameter) / Total No. of responses in All parameters.**

## Participants

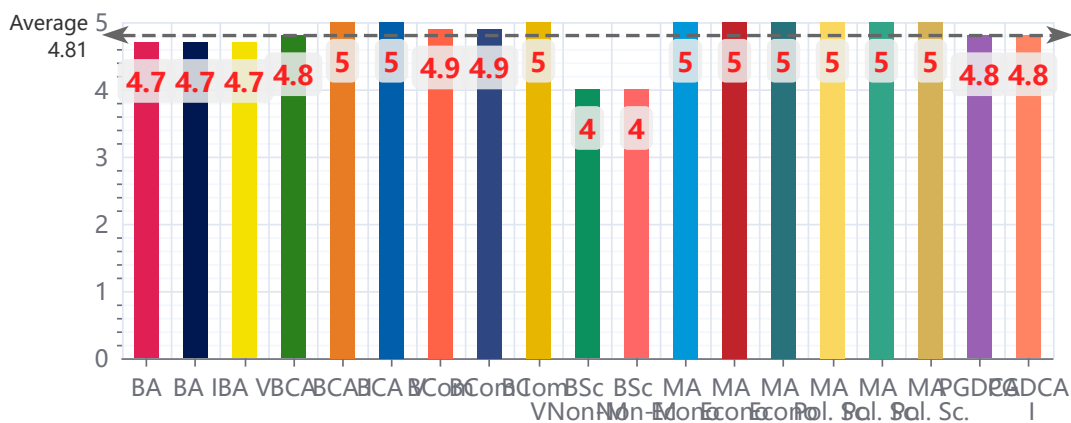
Type	Course	Respondents
Under Graduate	BA	141
Under Graduate	BA I	90
Under Graduate	BA V	49
Under Graduate	BCA	10
Under Graduate	BCA I	4
Under Graduate	BCA V	2
Under Graduate	BCom	99
Under Graduate	BCom I	85
Under Graduate	BCom V	14
Under Graduate	BSc Non-Med.	1
Under Graduate	BSc Non-Med. I	1
Post Graduate	MA Economics	5
Post Graduate	MA Economics I	3
Post Graduate	MA Economics V	1
Post Graduate	MA Pol. Sc.	5
Post Graduate	MA Pol. Sc. I	2
Post Graduate	MA Pol. Sc. V	3
Post Graduate	PGDCA	12
Post Graduate	PGDCA I	12
	TOTAL	539

Analysis and Interpretation of Student Satisfaction Survey:

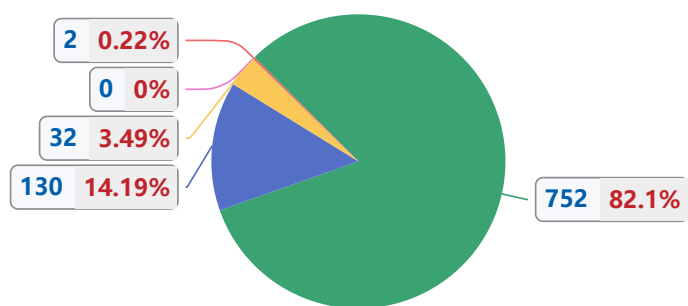
# 1 - Regularity in taking lectures

Course	Excellent (5)	Very Good (4)	Good (3)	Fair (2)	Average (1)	Total	Mean Score
BA	189	50	14	0	1	254	4.7
BA I	117	31	9	0	1	158	4.7
BA V	69	19	5	0	0	93	4.7
BCA	13	4	0	0	0	17	4.8
BCA I	6	0	0	0	0	6	5.0
BCA V	2	0	0	0	0	2	5.0
BCom	135	4	2	0	0	141	4.9
BCom I	119	4	2	0	0	125	4.9
BCom V	15	0	0	0	0	15	5.0
BSc Non-Med.	0	1	0	0	0	1	4.0
BSc Non-Med. I	0	1	0	0	0	1	4.0
MA Economics	9	0	0	0	0	9	5.0
MA Economics I	5	0	0	0	0	5	5.0
MA Economics V	1	0	0	0	0	1	5.0
MA Pol. Sc.	9	0	0	0	0	9	5.0
MA Pol. Sc. I	4	0	0	0	0	4	5.0
MA Pol. Sc. V	5	0	0	0	0	5	5.0
PGDCA	27	8	0	0	0	35	4.8
PGDCA I	27	8	0	0	0	35	4.8
<b>Total</b>	<b>752</b>	<b>130</b>	<b>32</b>	<b>0</b>	<b>2</b>	<b>916</b>	<b>4.8</b>

Course wise Mean Score



## Option wise Respondents

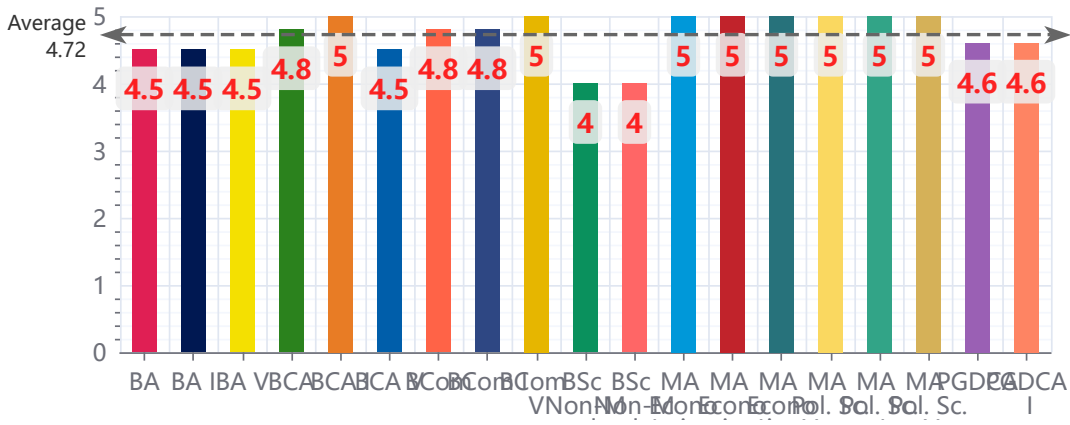


■ Excellent 
 ■ Very Good 
 ■ Good 
 ■ Fair 
 ■ Average

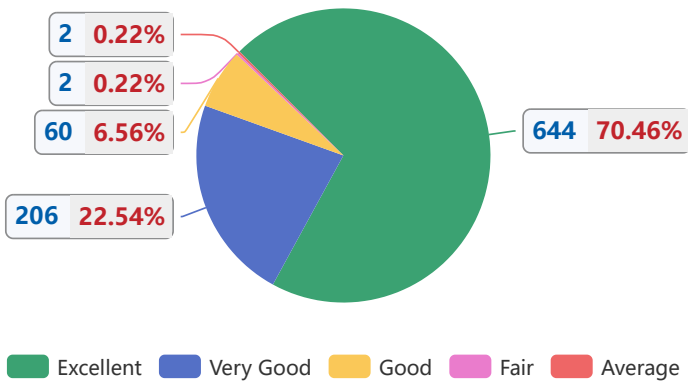
## 2 - Punctuality in class

Course	Excellent (5)	Very Good (4)	Good (3)	Fair (2)	Average (1)	Total	Mean Score
BA	153	72	26	1	1	253	4.5
BA I	100	37	18	1	1	157	4.5
BA V	50	35	8	0	0	93	4.5
BCA	14	3	0	0	0	17	4.8
BCA I	6	0	0	0	0	6	5.0
BCA V	1	1	0	0	0	2	4.5
BCom	122	15	4	0	0	141	4.8
BCom I	106	15	4	0	0	125	4.8
BCom V	15	0	0	0	0	15	5.0
BSc Non-Med.	0	1	0	0	0	1	4.0
BSc Non-Med. I	0	1	0	0	0	1	4.0
MA Economics	9	0	0	0	0	9	5.0
MA Economics I	5	0	0	0	0	5	5.0
MA Economics V	1	0	0	0	0	1	5.0
MA Pol. Sc.	9	0	0	0	0	9	5.0
MA Pol. Sc. I	4	0	0	0	0	4	5.0
MA Pol. Sc. V	5	0	0	0	0	5	5.0
PGDCA	22	13	0	0	0	35	4.6
PGDCA I	22	13	0	0	0	35	4.6
Total	644	206	60	2	2	914	4.6

### Course wise Mean Score



### Option wise Respondents

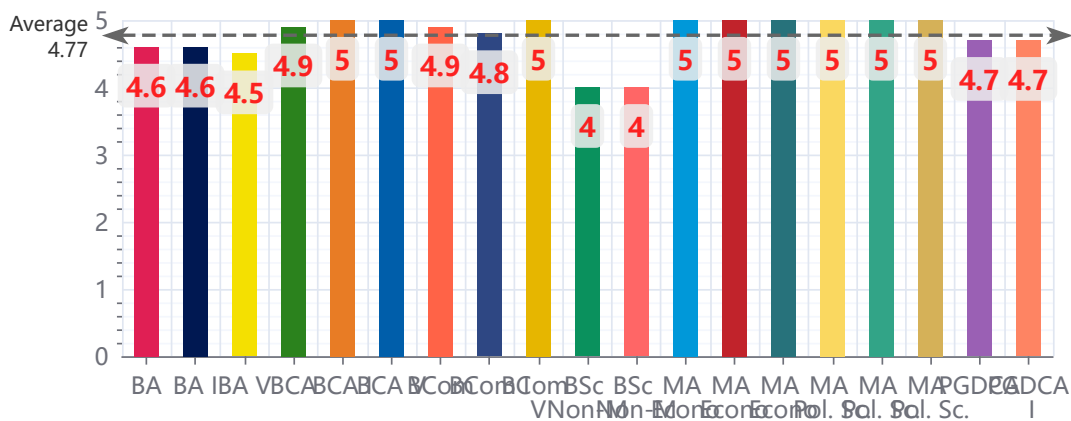


■ Excellent 
 ■ Very Good 
 ■ Good 
 ■ Fair 
 ■ Average

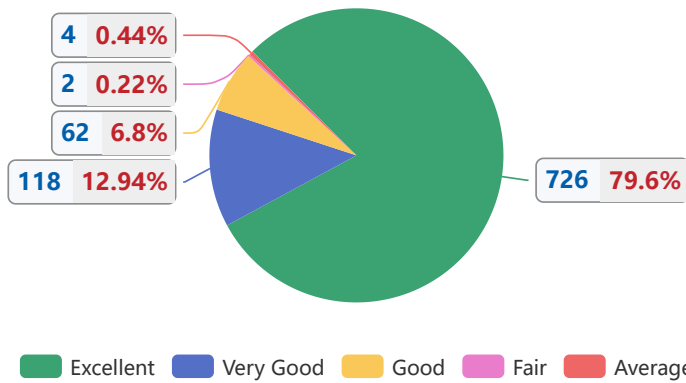
### 3 - Knowledge about subject taught

Course	Excellent (5)	Very Good (4)	Good (3)	Fair (2)	Average (1)	Total	Mean Score
BA	183	44	24	0	2	253	4.6
BA I	119	23	13	0	2	157	4.6
BA V	61	21	11	0	0	93	4.5
BCA	15	2	0	0	0	17	4.9
BCA I	6	0	0	0	0	6	5.0
BCA V	2	0	0	0	0	2	5.0
BCom	127	7	5	1	0	140	4.9
BCom I	111	7	5	1	0	124	4.8
BCom V	15	0	0	0	0	15	5.0
BSc Non-Med.	0	1	0	0	0	1	4.0
BSc Non-Med. I	0	1	0	0	0	1	4.0
MA Economics	9	0	0	0	0	9	5.0
MA Economics I	5	0	0	0	0	5	5.0
MA Economics V	1	0	0	0	0	1	5.0
MA Pol. Sc.	9	0	0	0	0	9	5.0
MA Pol. Sc. I	4	0	0	0	0	4	5.0
MA Pol. Sc. V	5	0	0	0	0	5	5.0
PGDCA	27	6	2	0	0	35	4.7
PGDCA I	27	6	2	0	0	35	4.7
Total	726	118	62	2	4	912	4.7

Course wise Mean Score



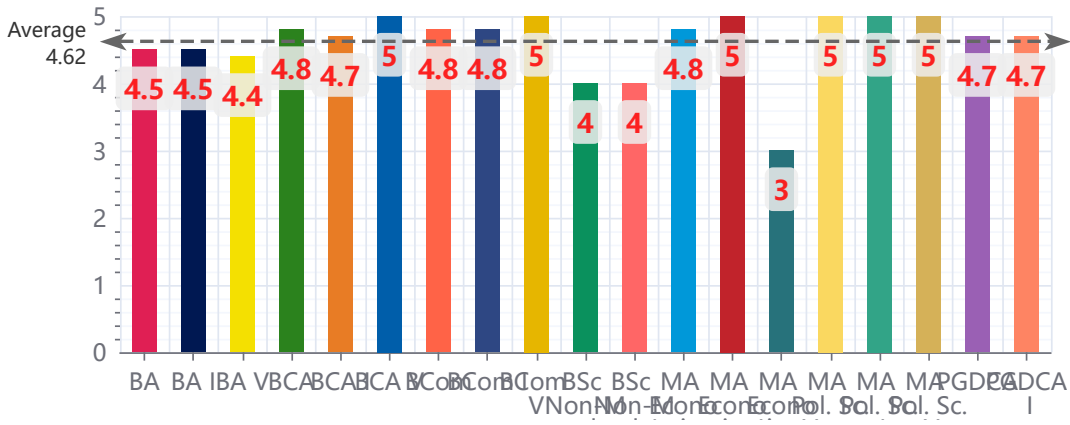
## Option wise Respondents



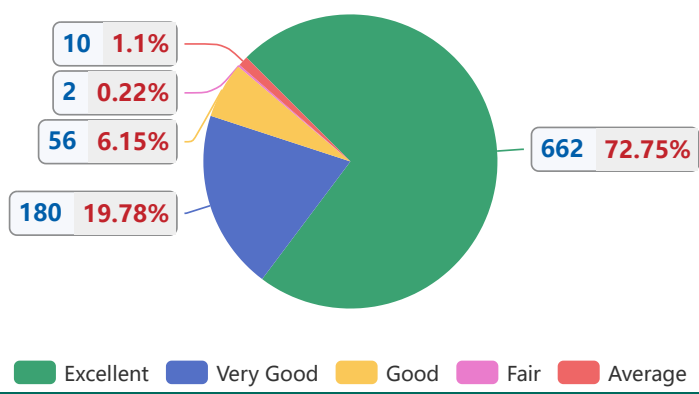
### 4 - Ability to link current knowledge and practical experience while teaching

Course	Excellent (5)	Very Good (4)	Good (3)	Fair (2)	Average (1)	Total	Mean Score
BA	163	61	21	1	5	251	4.5
BA I	108	31	12	0	4	155	4.5
BA V	52	30	9	1	1	93	4.4
BCA	13	4	0	0	0	17	4.8
BCA I	4	2	0	0	0	6	4.7
BCA V	2	0	0	0	0	2	5.0
BCom	120	17	4	0	0	141	4.8
BCom I	104	17	4	0	0	125	4.8
BCom V	15	0	0	0	0	15	5.0
BSc Non-Med.	0	1	0	0	0	1	4.0
BSc Non-Med. I	0	1	0	0	0	1	4.0
MA Economics	8	0	1	0	0	9	4.8
MA Economics I	5	0	0	0	0	5	5.0
MA Economics V	0	0	1	0	0	1	3.0
MA Pol. Sc.	9	0	0	0	0	9	5.0
MA Pol. Sc. I	4	0	0	0	0	4	5.0
MA Pol. Sc. V	5	0	0	0	0	5	5.0
PGDCA	25	8	2	0	0	35	4.7
PGDCA I	25	8	2	0	0	35	4.7
Total	662	180	56	2	10	910	4.6

### Course wise Mean Score



### Option wise Respondents



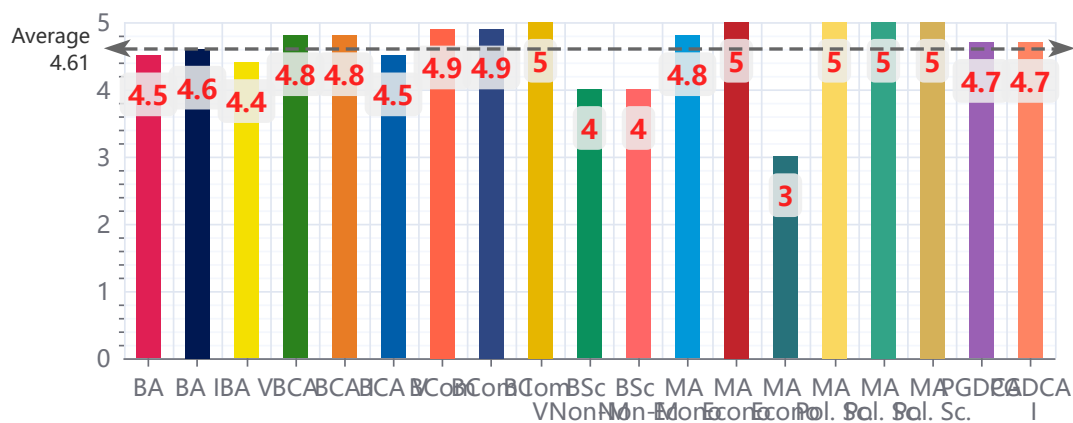
■ Excellent 
 ■ Very Good 
 ■ Good 
 ■ Fair 
 ■ Average



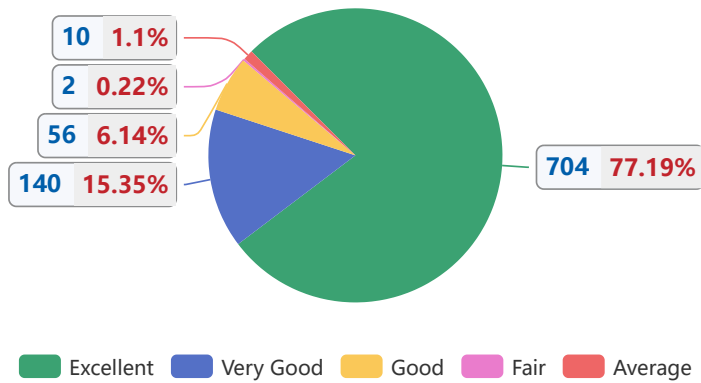
## 5 - Ability to involve students while teaching

Course	Excellent (5)	Very Good (4)	Good (3)	Fair (2)	Average (1)	Total	Mean Score
BA	172	54	20	1	5	252	4.5
BA I	111	33	9	0	3	156	4.6
BA V	58	21	11	1	2	93	4.4
BCA	13	4	0	0	0	17	4.8
BCA I	5	1	0	0	0	6	4.8
BCA V	1	1	0	0	0	2	4.5
BCom	131	5	5	0	0	141	4.9
BCom I	115	5	5	0	0	125	4.9
BCom V	15	0	0	0	0	15	5.0
BSc Non-Med.	0	1	0	0	0	1	4.0
BSc Non-Med. I	0	1	0	0	0	1	4.0
MA Economics	8	0	1	0	0	9	4.8
MA Economics I	5	0	0	0	0	5	5.0
MA Economics V	0	0	1	0	0	1	3.0
MA Pol. Sc.	9	0	0	0	0	9	5.0
MA Pol. Sc. I	4	0	0	0	0	4	5.0
MA Pol. Sc. V	5	0	0	0	0	5	5.0
PGDCA	26	7	2	0	0	35	4.7
PGDCA I	26	7	2	0	0	35	4.7
Total	704	140	56	2	10	912	4.7

Course wise Mean Score



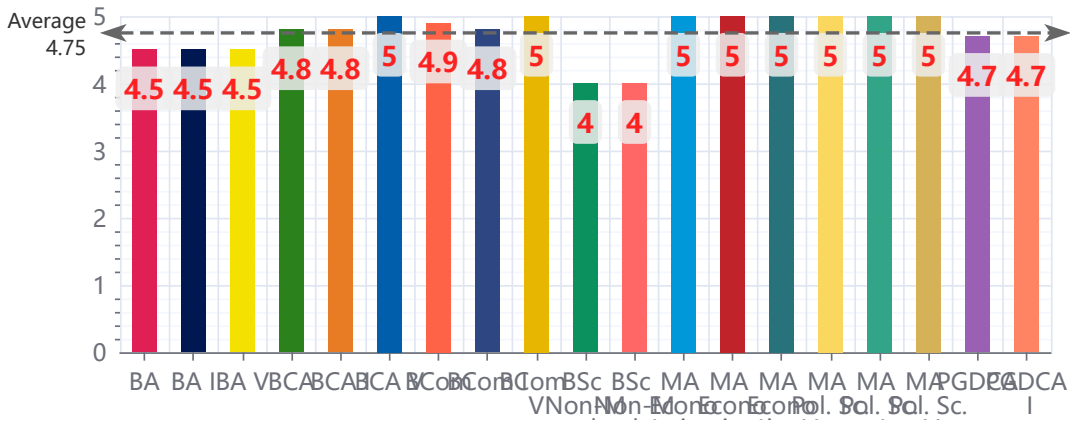
## Option wise Respondents



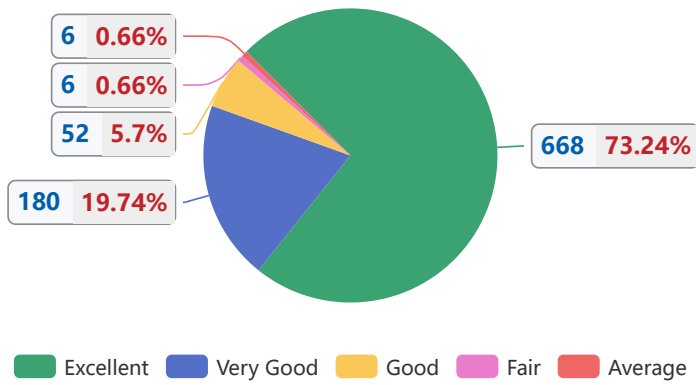
## 6 - Ability to maintain discipline in class

Course	Excellent (5)	Very Good (4)	Good (3)	Fair (2)	Average (1)	Total	Mean Score
BA	158	69	21	2	3	253	4.5
BA I	101	41	11	1	3	157	4.5
BA V	54	28	10	1	0	93	4.5
BCA	13	3	0	0	0	16	4.8
BCA I	4	1	0	0	0	5	4.8
BCA V	2	0	0	0	0	2	5.0
BCom	125	13	2	1	0	141	4.9
BCom I	109	13	2	1	0	125	4.8
BCom V	15	0	0	0	0	15	5.0
BSc Non-Med.	0	1	0	0	0	1	4.0
BSc Non-Med. I	0	1	0	0	0	1	4.0
MA Economics	9	0	0	0	0	9	5.0
MA Economics I	5	0	0	0	0	5	5.0
MA Economics V	1	0	0	0	0	1	5.0
MA Pol. Sc.	9	0	0	0	0	9	5.0
MA Pol. Sc. I	4	0	0	0	0	4	5.0
MA Pol. Sc. V	5	0	0	0	0	5	5.0
PGDCA	27	5	3	0	0	35	4.7
PGDCA I	27	5	3	0	0	35	4.7
Total	668	180	52	6	6	912	4.6

### Course wise Mean Score



### Option wise Respondents

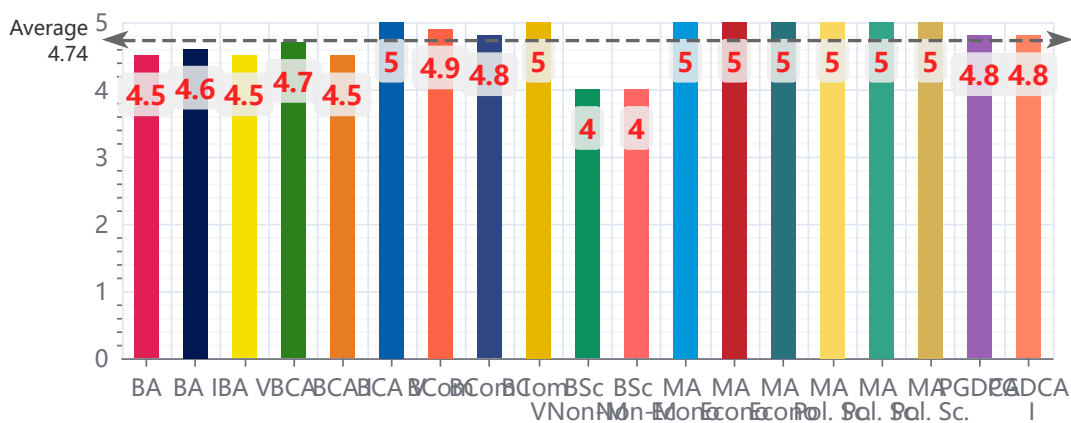


■ Excellent 
 ■ Very Good 
 ■ Good 
 ■ Fair 
 ■ Average

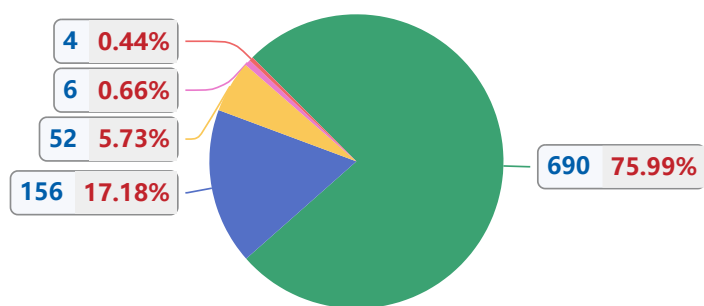
## 7 - Communication skills in Class

Course	Excellent (5)	Very Good (4)	Good (3)	Fair (2)	Average (1)	Total	Mean Score
BA	170	56	21	3	2	252	4.5
BA I	109	31	11	3	2	156	4.6
BA V	58	25	10	0	0	93	4.5
BCA	13	3	1	0	0	17	4.7
BCA I	4	1	1	0	0	6	4.5
BCA V	2	0	0	0	0	2	5.0
BCom	125	13	3	0	0	141	4.9
BCom I	109	13	3	0	0	125	4.8
BCom V	15	0	0	0	0	15	5.0
BSc Non-Med.	0	1	0	0	0	1	4.0
BSc Non-Med. I	0	1	0	0	0	1	4.0
MA Economics	9	0	0	0	0	9	5.0
MA Economics I	5	0	0	0	0	5	5.0
MA Economics V	1	0	0	0	0	1	5.0
MA Pol. Sc.	9	0	0	0	0	9	5.0
MA Pol. Sc. I	4	0	0	0	0	4	5.0
MA Pol. Sc. V	5	0	0	0	0	5	5.0
PGDCA	26	6	1	0	0	33	4.8
PGDCA I	26	6	1	0	0	33	4.8
Total	690	156	52	6	4	908	4.7

Course wise Mean Score



## Option wise Respondents

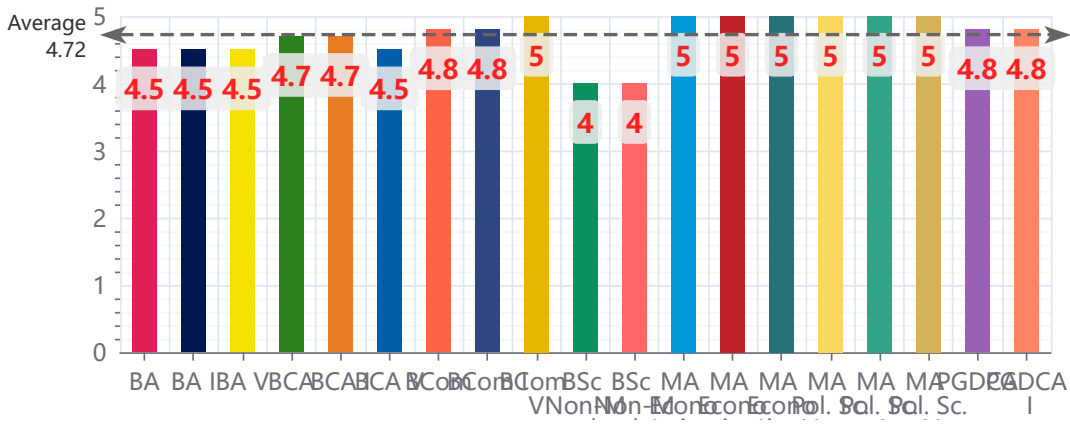


■ Excellent 
 ■ Very Good 
 ■ Good 
 ■ Fair 
 ■ Average

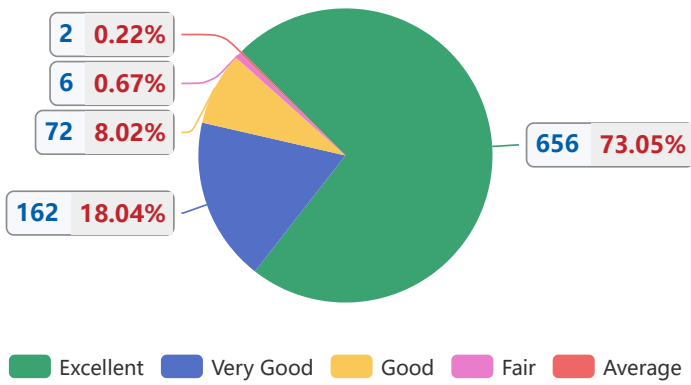
## 8 - Use of modern teaching aids in lecture

Course	Excellent (5)	Very Good (4)	Good (3)	Fair (2)	Average (1)	Total	Mean Score
BA	157	56	30	3	1	247	4.5
BA I	99	32	19	3	1	154	4.5
BA V	55	24	11	0	0	90	4.5
BCA	12	5	0	0	0	17	4.7
BCA I	4	2	0	0	0	6	4.7
BCA V	1	1	0	0	0	2	4.5
BCom	121	12	6	0	0	139	4.8
BCom I	106	12	6	0	0	124	4.8
BCom V	14	0	0	0	0	14	5.0
BSc Non-Med.	0	1	0	0	0	1	4.0
BSc Non-Med. I	0	1	0	0	0	1	4.0
MA Economics	9	0	0	0	0	9	5.0
MA Economics I	5	0	0	0	0	5	5.0
MA Economics V	1	0	0	0	0	1	5.0
MA Pol. Sc.	9	0	0	0	0	9	5.0
MA Pol. Sc. I	4	0	0	0	0	4	5.0
MA Pol. Sc. V	5	0	0	0	0	5	5.0
PGDCA	27	8	0	0	0	35	4.8
PGDCA I	27	8	0	0	0	35	4.8
Total	656	162	72	6	2	898	4.6

### Course wise Mean Score



### Option wise Respondents

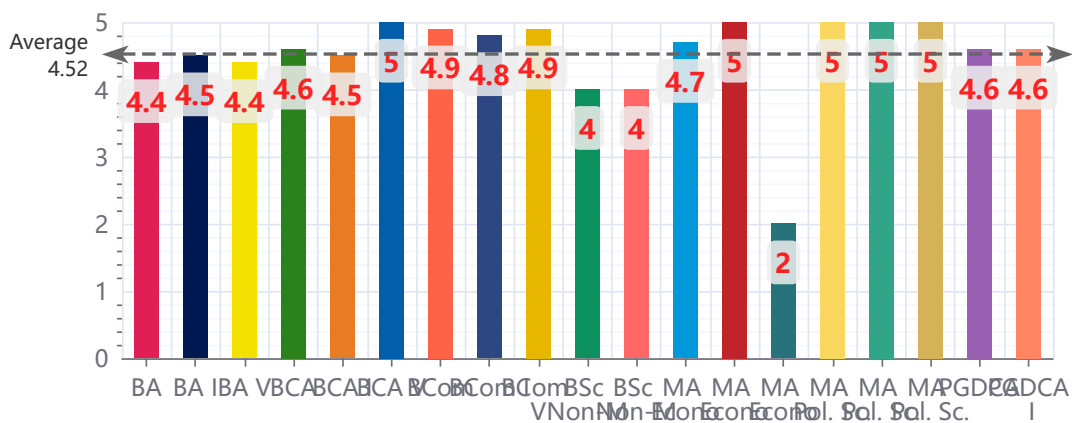


■ Excellent 
 ■ Very Good 
 ■ Good 
 ■ Fair 
 ■ Average

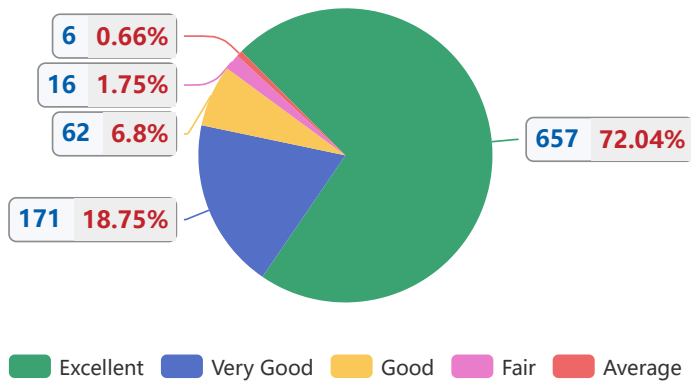
## 9 - Availability outside the class

Course	Excellent (5)	Very Good (4)	Good (3)	Fair (2)	Average (1)	Total	Mean Score
BA	156	64	24	5	3	252	4.4
BA I	99	39	12	4	2	156	4.5
BA V	54	25	12	1	1	93	4.4
BCA	11	6	0	0	0	17	4.6
BCA I	3	3	0	0	0	6	4.5
BCA V	2	0	0	0	0	2	5.0
BCom	125	12	3	1	0	141	4.9
BCom I	111	10	3	1	0	125	4.8
BCom V	13	2	0	0	0	15	4.9
BSc Non-Med.	0	1	0	0	0	1	4.0
BSc Non-Med. I	0	1	0	0	0	1	4.0
MA Economics	8	0	0	1	0	9	4.7
MA Economics I	5	0	0	0	0	5	5.0
MA Economics V	0	0	0	1	0	1	2.0
MA Pol. Sc.	9	0	0	0	0	9	5.0
MA Pol. Sc. I	4	0	0	0	0	4	5.0
MA Pol. Sc. V	5	0	0	0	0	5	5.0
PGDCA	26	4	4	1	0	35	4.6
PGDCA I	26	4	4	1	0	35	4.6
Total	657	171	62	16	6	912	4.6

Course wise Mean Score



## Option wise Respondents

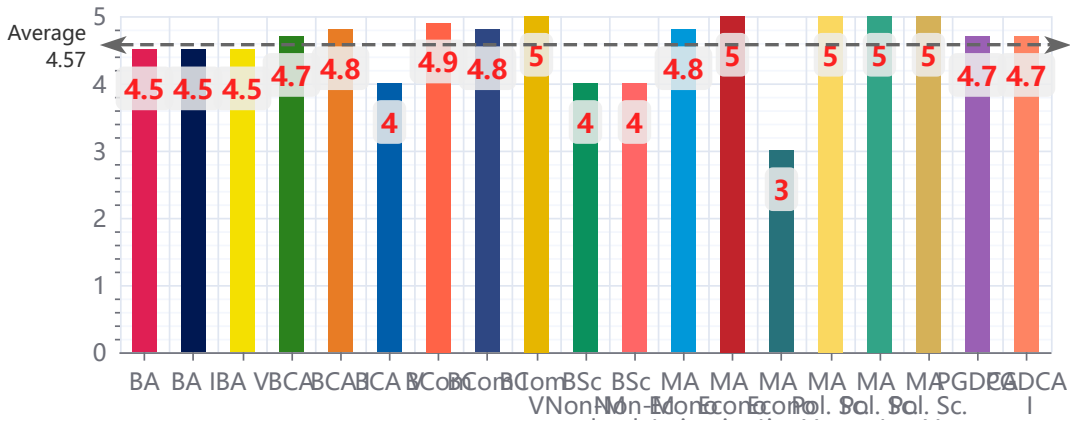


## 10 - Covers syllabus in time

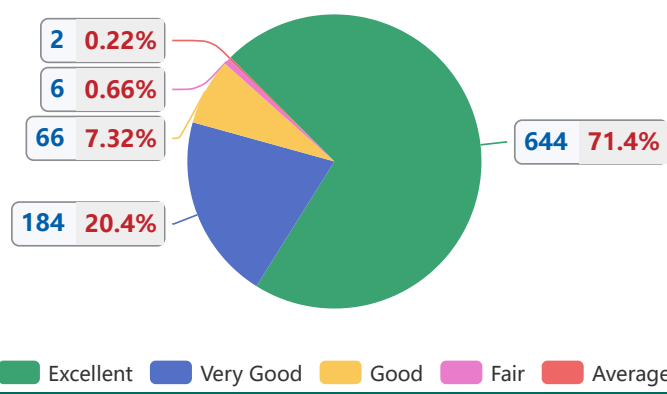
Course	Excellent (5)	Very Good (4)	Good (3)	Fair (2)	Average (1)	Total	Mean Score
BA	153	64	28	3	1	249	4.5
BA I	96	38	17	3	1	155	4.5
BA V	54	26	11	0	0	91	4.5
BCA	12	5	0	0	0	17	4.7
BCA I	5	1	0	0	0	6	4.8
BCA V	0	2	0	0	0	2	4.0
BCom	122	15	2	0	0	139	4.9
BCom I	106	15	2	0	0	123	4.8
BCom V	15	0	0	0	0	15	5.0
BSc Non-Med.	0	1	0	0	0	1	4.0
BSc Non-Med. I	0	1	0	0	0	1	4.0
MA Economics	8	0	1	0	0	9	4.8
MA Economics I	5	0	0	0	0	5	5.0
MA Economics V	0	0	1	0	0	1	3.0
MA Pol. Sc.	9	0	0	0	0	9	5.0
MA Pol. Sc. I	4	0	0	0	0	4	5.0
MA Pol. Sc. V	5	0	0	0	0	5	5.0
PGDCA	25	8	2	0	0	35	4.7
PGDCA I	25	8	2	0	0	35	4.7
Total	644	184	66	6	2	902	4.6



### Course wise Mean Score



### Option wise Respondents

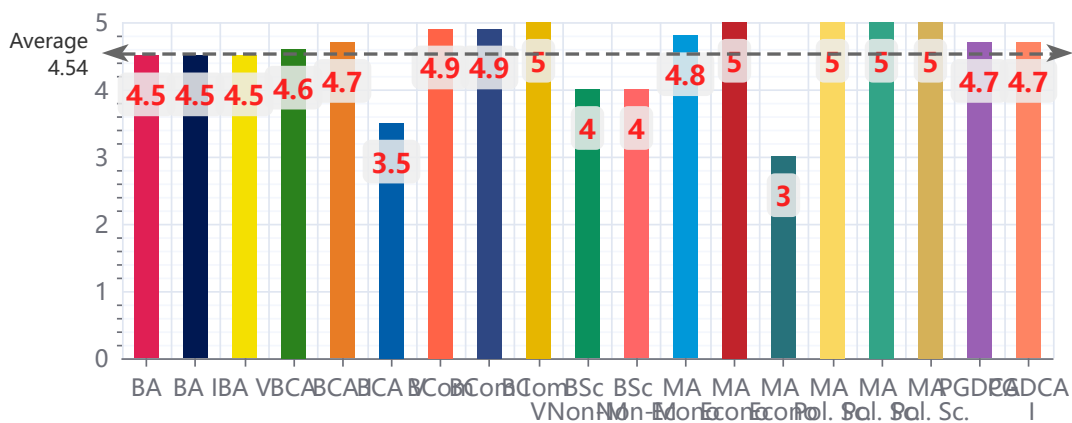


■ Excellent 
 ■ Very Good 
 ■ Good 
 ■ Fair 
 ■ Average

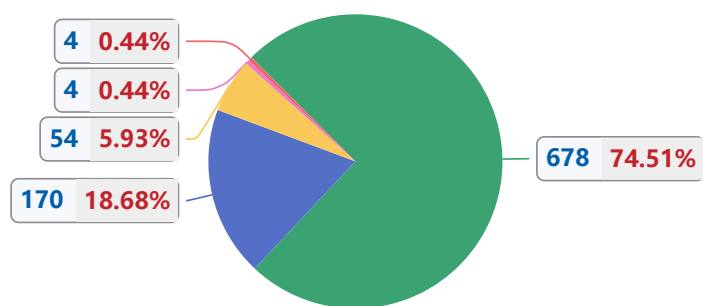
## 11 - Uses fair internal evaluation process

Course	Excellent (5)	Very Good (4)	Good (3)	Fair (2)	Average (1)	Total	Mean Score
BA	166	59	22	2	2	251	4.5
BA I	104	35	14	1	2	156	4.5
BA V	59	24	8	1	0	92	4.5
BCA	11	5	1	0	0	17	4.6
BCA I	4	2	0	0	0	6	4.7
BCA V	0	1	1	0	0	2	3.5
BCom	128	11	2	0	0	141	4.9
BCom I	112	11	2	0	0	125	4.9
BCom V	15	0	0	0	0	15	5.0
BSc Non-Med.	0	1	0	0	0	1	4.0
BSc Non-Med. I	0	1	0	0	0	1	4.0
MA Economics	8	0	1	0	0	9	4.8
MA Economics I	5	0	0	0	0	5	5.0
MA Economics V	0	0	1	0	0	1	3.0
MA Pol. Sc.	9	0	0	0	0	9	5.0
MA Pol. Sc. I	4	0	0	0	0	4	5.0
MA Pol. Sc. V	5	0	0	0	0	5	5.0
PGDCA	24	10	1	0	0	35	4.7
PGDCA I	24	10	1	0	0	35	4.7
Total	678	170	54	4	4	910	4.7

Course wise Mean Score



## Option wise Respondents

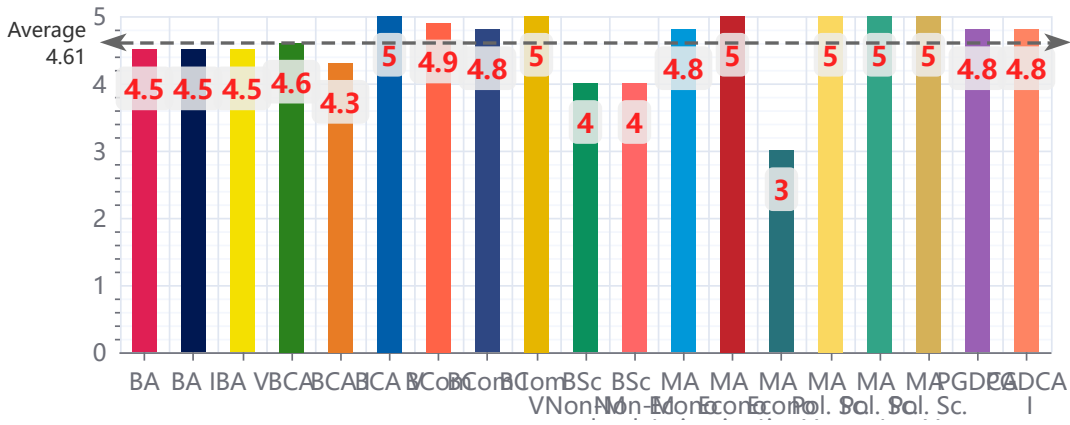


■ Excellent 
 ■ Very Good 
 ■ Good 
 ■ Fair 
 ■ Average

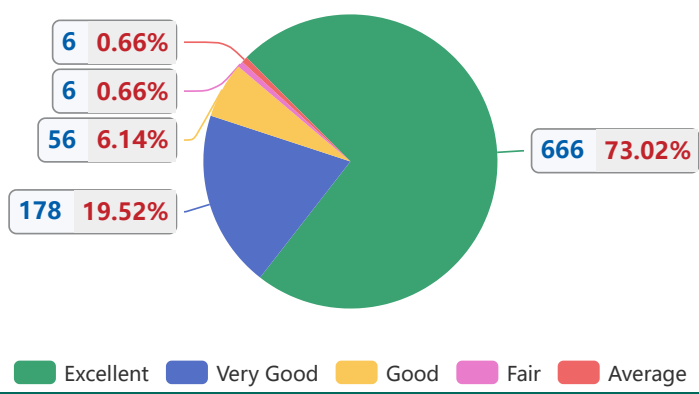
## 12 - Gives practical projects/case studies that enhances learning of students

Course	Excellent (5)	Very Good (4)	Good (3)	Fair (2)	Average (1)	Total	Mean Score
BA	158	68	22	2	3	253	4.5
BA I	101	37	15	1	3	157	4.5
BA V	54	31	7	1	0	93	4.5
BCA	11	6	0	0	0	17	4.6
BCA I	2	4	0	0	0	6	4.3
BCA V	2	0	0	0	0	2	5.0
BCom	125	11	3	1	0	140	4.9
BCom I	109	11	3	1	0	124	4.8
BCom V	15	0	0	0	0	15	5.0
BSc Non-Med.	0	1	0	0	0	1	4.0
BSc Non-Med. I	0	1	0	0	0	1	4.0
MA Economics	8	0	1	0	0	9	4.8
MA Economics I	5	0	0	0	0	5	5.0
MA Economics V	0	0	1	0	0	1	3.0
MA Pol. Sc.	9	0	0	0	0	9	5.0
MA Pol. Sc. I	4	0	0	0	0	4	5.0
MA Pol. Sc. V	5	0	0	0	0	5	5.0
PGDCA	29	4	2	0	0	35	4.8
PGDCA I	29	4	2	0	0	35	4.8
<b>Total</b>	<b>666</b>	<b>178</b>	<b>56</b>	<b>6</b>	<b>6</b>	<b>912</b>	<b>4.6</b>

### Course wise Mean Score



### Option wise Respondents

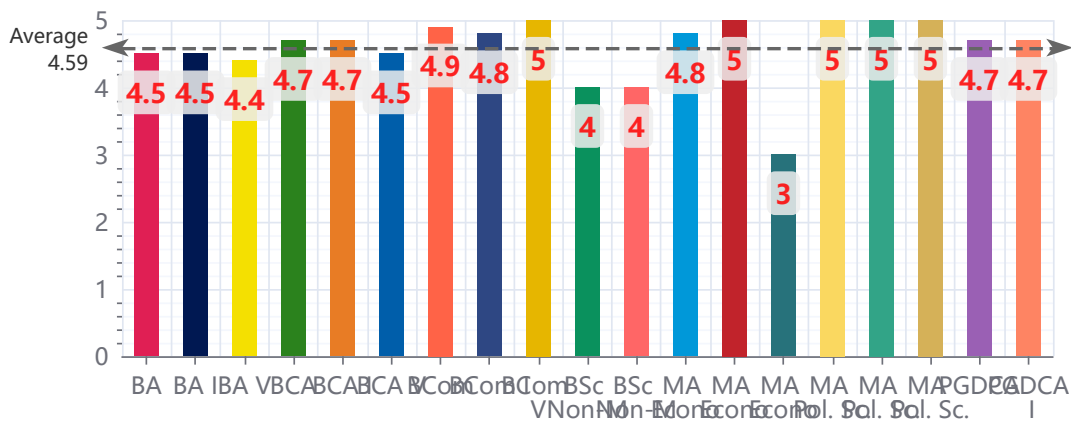


■ Excellent 
 ■ Very Good 
 ■ Good 
 ■ Fair 
 ■ Average

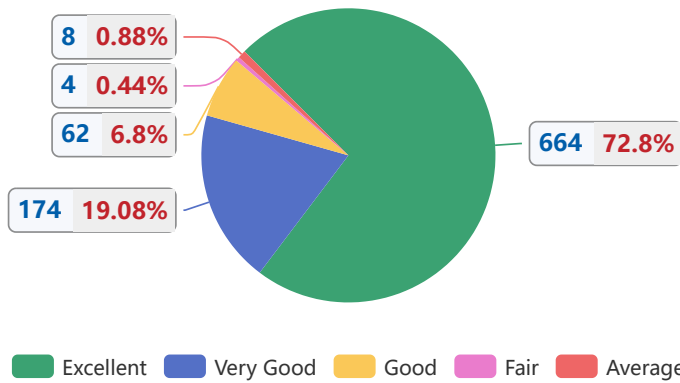
### 13 - Gives appropriate feedback to improve performance of students

Course	Excellent (5)	Very Good (4)	Good (3)	Fair (2)	Average (1)	Total	Mean Score
BA	162	59	25	2	4	252	4.5
BA I	108	31	15	1	2	157	4.5
BA V	51	28	10	1	2	92	4.4
BCA	12	5	0	0	0	17	4.7
BCA I	4	2	0	0	0	6	4.7
BCA V	1	1	0	0	0	2	4.5
BCom	124	13	4	0	0	141	4.9
BCom I	108	13	4	0	0	125	4.8
BCom V	15	0	0	0	0	15	5.0
BSc Non-Med.	0	1	0	0	0	1	4.0
BSc Non-Med. I	0	1	0	0	0	1	4.0
MA Economics	8	0	1	0	0	9	4.8
MA Economics I	5	0	0	0	0	5	5.0
MA Economics V	0	0	1	0	0	1	3.0
MA Pol. Sc.	9	0	0	0	0	9	5.0
MA Pol. Sc. I	4	0	0	0	0	4	5.0
MA Pol. Sc. V	5	0	0	0	0	5	5.0
PGDCA	24	10	1	0	0	35	4.7
PGDCA I	24	10	1	0	0	35	4.7
Total	664	174	62	4	8	912	4.6

Course wise Mean Score



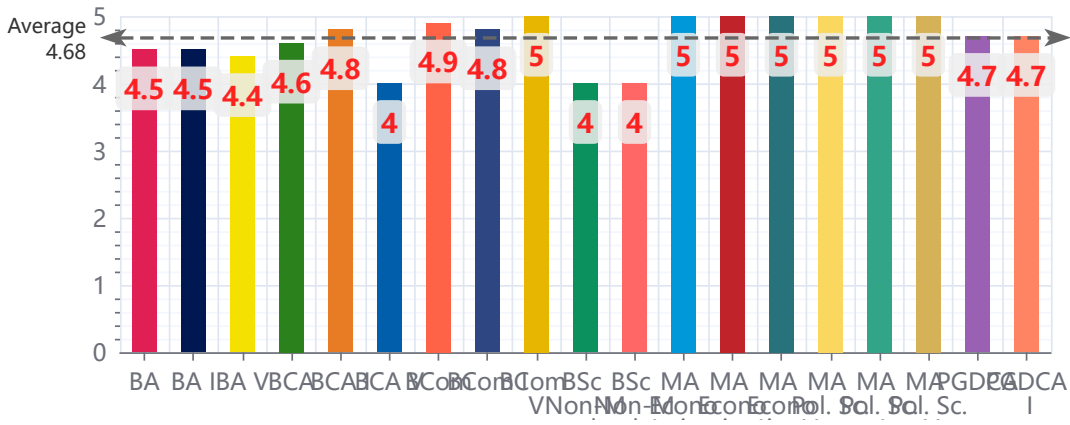
## Option wise Respondents



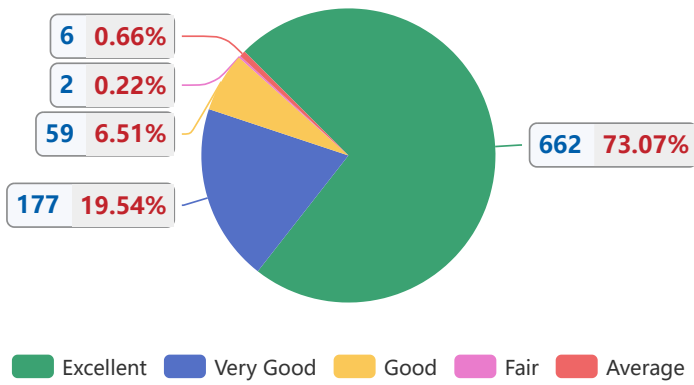
## 14 - Attitude of teachers towards students who participate in the extra-curricular activities?

Course	Excellent (5)	Very Good (4)	Good (3)	Fair (2)	Average (1)	Total	Mean Score
BA	158	66	23	1	3	251	4.5
BA I	101	38	14	0	2	155	4.5
BA V	54	28	9	1	1	93	4.4
BCA	11	4	1	0	0	16	4.6
BCA I	4	1	0	0	0	5	4.8
BCA V	0	2	0	0	0	2	4.0
BCom	124	12	4	0	0	140	4.9
BCom I	109	12	4	0	0	125	4.8
BCom V	14	0	0	0	0	14	5.0
BSc Non-Med.	0	1	0	0	0	1	4.0
BSc Non-Med. I	0	1	0	0	0	1	4.0
MA Economics	9	0	0	0	0	9	5.0
MA Economics I	5	0	0	0	0	5	5.0
MA Economics V	1	0	0	0	0	1	5.0
MA Pol. Sc.	9	0	0	0	0	9	5.0
MA Pol. Sc. I	4	0	0	0	0	4	5.0
MA Pol. Sc. V	5	0	0	0	0	5	5.0
PGDCA	27	6	2	0	0	35	4.7
PGDCA I	27	6	2	0	0	35	4.7
Total	662	177	59	2	6	906	4.6

### Course wise Mean Score



### Option wise Respondents

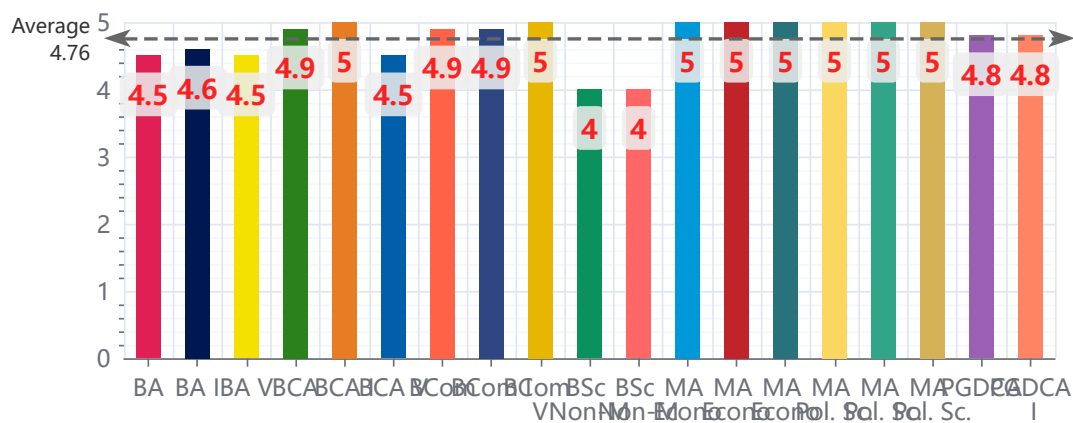


■ Excellent 
 ■ Very Good 
 ■ Good 
 ■ Fair 
 ■ Average

## 15 - Ability of the teacher to design quizzes/ tests/ assignments

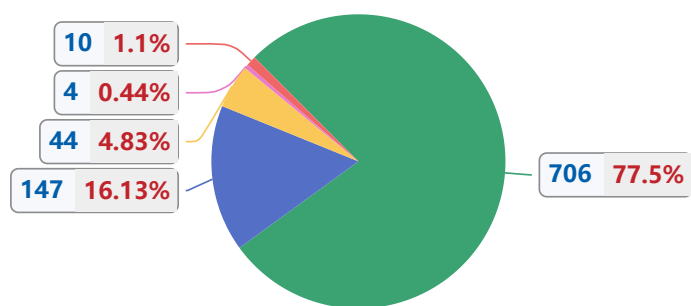
Course	Excellent (5)	Very Good (4)	Good (3)	Fair (2)	Average (1)	Total	Mean Score
BA	171	57	17	2	5	252	4.5
BA I	113	30	9	1	4	157	4.6
BA V	56	27	8	1	1	93	4.5
BCA	15	2	0	0	0	17	4.9
BCA I	6	0	0	0	0	6	5.0
BCA V	1	1	0	0	0	2	4.5
BCom	127	10	3	0	0	140	4.9
BCom I	111	10	3	0	0	124	4.9
BCom V	15	0	0	0	0	15	5.0
BSc Non-Med.	0	1	0	0	0	1	4.0
BSc Non-Med. I	0	1	0	0	0	1	4.0
MA Economics	9	0	0	0	0	9	5.0
MA Economics I	5	0	0	0	0	5	5.0
MA Economics V	1	0	0	0	0	1	5.0
MA Pol. Sc.	9	0	0	0	0	9	5.0
MA Pol. Sc. I	4	0	0	0	0	4	5.0
MA Pol. Sc. V	5	0	0	0	0	5	5.0
PGDCA	29	4	2	0	0	35	4.8
PGDCA I	29	4	2	0	0	35	4.8
Total	706	147	44	4	10	911	4.7

Course wise Mean Score





## Option wise Respondents

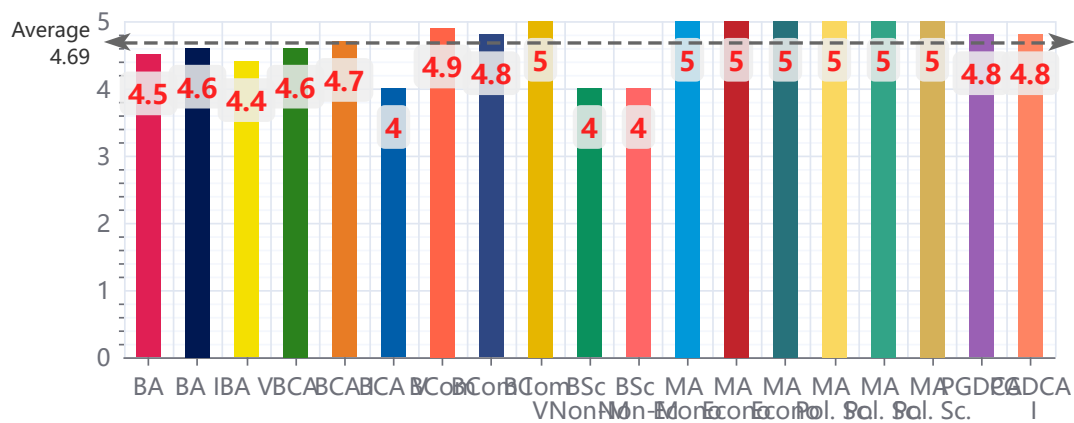


■ Excellent 
 ■ Very Good 
 ■ Good 
 ■ Fair 
 ■ Average

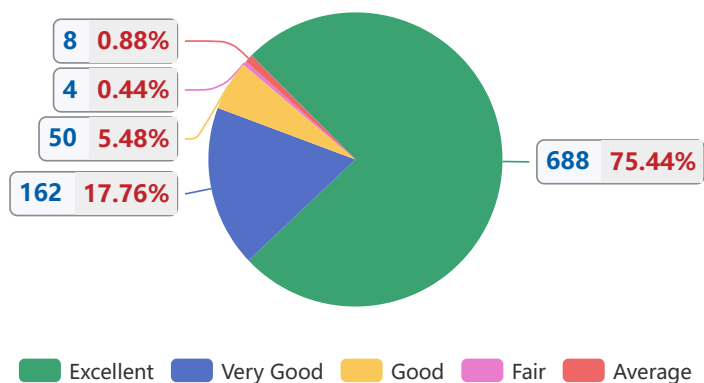
## 16 - How helpful was the teachers in advising?

Course	Excellent (5)	Very Good (4)	Good (3)	Fair (2)	Average (1)	Total	Mean Score
BA	165	61	21	1	4	252	4.5
BA I	107	36	11	0	3	157	4.6
BA V	55	25	10	1	1	92	4.4
BCA	12	4	1	0	0	17	4.6
BCA I	4	2	0	0	0	6	4.7
BCA V	1	0	1	0	0	2	4.0
BCom	127	10	3	1	0	141	4.9
BCom I	111	10	3	1	0	125	4.8
BCom V	15	0	0	0	0	15	5.0
BSc Non-Med.	0	1	0	0	0	1	4.0
BSc Non-Med. I	0	1	0	0	0	1	4.0
MA Economics	9	0	0	0	0	9	5.0
MA Economics I	5	0	0	0	0	5	5.0
MA Economics V	1	0	0	0	0	1	5.0
MA Pol. Sc.	9	0	0	0	0	9	5.0
MA Pol. Sc. I	4	0	0	0	0	4	5.0
MA Pol. Sc. V	5	0	0	0	0	5	5.0
PGDCA	29	6	0	0	0	35	4.8
PGDCA I	29	6	0	0	0	35	4.8
<b>Total</b>	<b>688</b>	<b>162</b>	<b>50</b>	<b>4</b>	<b>8</b>	<b>912</b>	<b>4.7</b>

### Course wise Mean Score



### Option wise Respondents



### Overall Mean Score for Various Parameters by Students of Various Courses

Course\Parameter	Regularity in taking lectures	Punctuality in class	Knowledge about subject taught	Ability to link current knowledge and practical exper	Ability to involve students while teaching	Ability to maintain discipline in class	Communication skills in Class	Use of modern teaching aids in lecture	Availability outside the class	Covers syllabus in time	Uses fair internal evaluation process	Gives practical projects/case studies that enhances l	Gives appropriate feedback to improve performance	Attitude of teachers towards students who participa	Ability of the teacher to design quizzes/ tests/ assign	How helpful was the teachers in advising?	Course wise Mean Score
BA	4.7	4.5	4.6	4.5	4.5	4.5	4.5	4.5	4.4	4.5	4.5	4.5	4.5	4.5	4.5	4.5	4.5
BA I	4.7	4.5	4.6	4.5	4.6	4.5	4.6	4.5	4.5	4.5	4.5	4.5	4.5	4.5	4.6	4.6	4.5
BA V	4.7	4.5	4.5	4.4	4.4	4.5	4.5	4.5	4.4	4.5	4.5	4.5	4.4	4.4	4.5	4.4	4.5
BCA	4.8	4.8	4.9	4.8	4.8	4.8	4.7	4.7	4.6	4.7	4.6	4.6	4.7	4.6	4.9	4.6	4.7
BCA I	5.0	5.0	5.0	4.7	4.8	4.8	4.5	4.7	4.5	4.8	4.7	4.3	4.7	4.8	5.0	4.7	4.7
BCA V	5.0	4.5	5.0	5.0	4.5	5.0	5.0	4.5	5.0	4.0	3.5	5.0	4.5	4.0	4.5	4.0	4.6
BCom	4.9	4.8	4.9	4.8	4.9	4.9	4.9	4.8	4.9	4.9	4.9	4.9	4.9	4.9	4.9	4.9	4.9
BCom I	4.9	4.8	4.8	4.8	4.9	4.8	4.8	4.8	4.8	4.8	4.9	4.8	4.8	4.8	4.9	4.8	4.8
BCom V	5.0	5.0	5.0	5.0	5.0	5.0	5.0	5.0	4.9	5.0	5.0	5.0	5.0	5.0	5.0	5.0	5.0
BSc Non-Med.	4.0	4.0	4.0	4.0	4.0	4.0	4.0	4.0	4.0	4.0	4.0	4.0	4.0	4.0	4.0	4.0	4.0
BSc Non-Med. I	4.0	4.0	4.0	4.0	4.0	4.0	4.0	4.0	4.0	4.0	4.0	4.0	4.0	4.0	4.0	4.0	4.0
MA Economics	5.0	5.0	5.0	4.8	4.8	5.0	5.0	5.0	4.7	4.8	4.8	4.8	4.8	5.0	5.0	5.0	4.9
MA Economics I	5.0	5.0	5.0	5.0	5.0	5.0	5.0	5.0	5.0	5.0	5.0	5.0	5.0	5.0	5.0	5.0	5.0
MA Economics V	5.0	5.0	5.0	3.0	3.0	5.0	5.0	5.0	2.0	3.0	3.0	3.0	3.0	5.0	5.0	5.0	4.1
MA Pol. Sc.	5.0	5.0	5.0	5.0	5.0	5.0	5.0	5.0	5.0	5.0	5.0	5.0	5.0	5.0	5.0	5.0	5.0
MA Pol. Sc. I	5.0	5.0	5.0	5.0	5.0	5.0	5.0	5.0	5.0	5.0	5.0	5.0	5.0	5.0	5.0	5.0	5.0
MA Pol. Sc. V	5.0	5.0	5.0	5.0	5.0	5.0	5.0	5.0	5.0	5.0	5.0	5.0	5.0	5.0	5.0	5.0	5.0
PGDCA	4.8	4.6	4.7	4.7	4.7	4.7	4.8	4.8	4.6	4.7	4.7	4.8	4.7	4.7	4.8	4.8	4.7
PGDCA I	4.8	4.6	4.7	4.7	4.7	4.7	4.8	4.8	4.6	4.7	4.7	4.8	4.7	4.7	4.8	4.8	4.7
Parameter wise Mean Score	4.8	4.6	4.7	4.6	4.7	4.6	4.7	4.6	4.6	4.6	4.7	4.6	4.6	4.6	4.7	4.7	4.7